

CO-ORGANIZED BY



VIDEO TAGE



University of Brighton

ISEA2016 would not have been possible without the generous support from these partners.

SUPPORTED BY



Hong Kong Arts Development Council fully supports freedom of artistic expression. The views and opinions expressed in this project do not represent the stand of the Council.

SPONSORED BY



VENUE PARTNERS



THE UNIVERSITY OF HONG KONG



The Chinese University of Hong Kong



MEDIA PARTNERS



# Parallel Programme

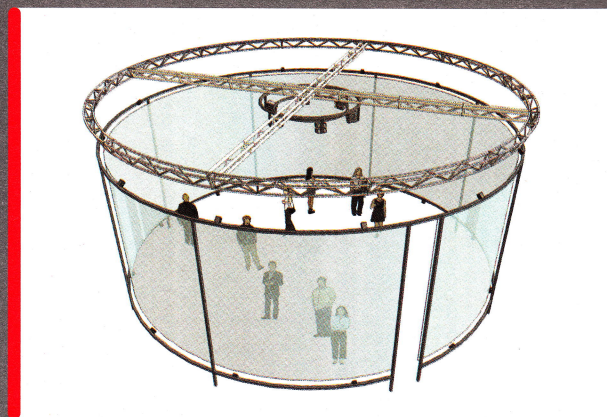
ISEA2016  
HONG KONG 香港  
CULTURAL  
R>EVOLUTION



## Four installations in Gallery360

09:30 /  
daily 19:00  
except  
Noor-A Brain Opera 2016  
at 14:30-15:00  
& 17:00-17:30

Gallery360 is the CityU School of Creative Media's immersive 360-degree stereoscopic visualization environment, which has evolved from the groundbreaking AVIE system developed in 2006 at the UNSW iCinema Research Centre. Besides its landmark applications in digital cultural heritage, numerous internationally acclaimed research projects have explored its unique capabilities as a platform for artistic expression, future cinema, and data visualization.



Venue address:  
M8001, 8th Floor,  
Run Run Shaw Creative Media Centre  
City University of Hong Kong  
18 Tat Hong Avenue, Kowloon Tong

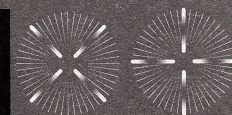
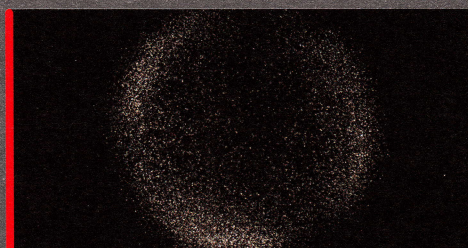


## Atmoscape 2016

Dennis Del Favero with Stephen Sewell,  
Jeffrey Shaw, Elwira Titan, Peter Weibel

19 & 22  
May  
2016

Atmoscape is an experimental cinematic adaptation of the 1835 novella *Lenz* by George Buchner. Atmoscape interactively accompanies the protagonist as he traverses a spectrum of interconnected dream worlds generated through an Artificially Intelligent particle visualisation system, ranging from worlds composed by the microscopic particles of his body, through to worlds created by the macroscopic particles of the atmosphere as he floats 30,000 kilometres above the earth.

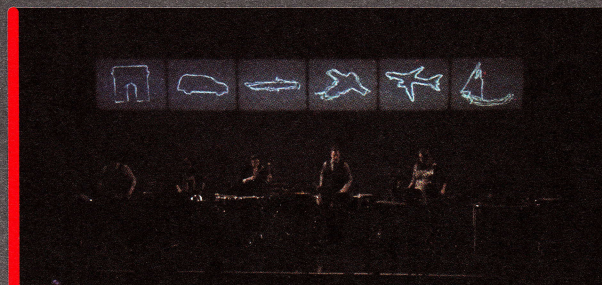


## Green Corn Dance

Alan Price

21 & 23  
May  
2016

Influenced by Inuit tradition, *Green Corn Dance* is a music composition scored by John Luther Adams. Computer graphics are driven in real time by the music to produce a visual perspective on global climate change. Images of animals and human technology were mined from the internet and procedurally altered with the appearance of raw film scratches or rock art.



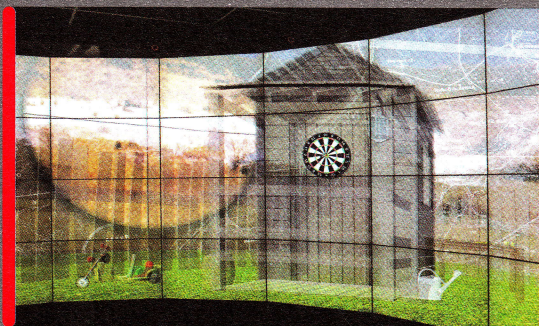
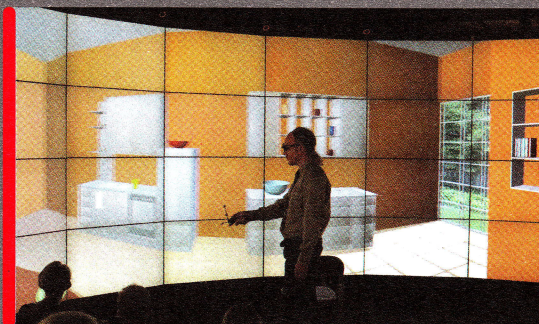
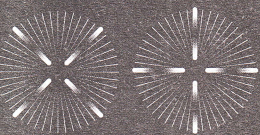


## Hearts and Minds: The Interrogations Project

Roderick Coover, Scott Rettberg,  
Daria Tsoupikova, Arthur Nishimoto

20  
May  
2016

Hearts and Minds: The Interrogations Project is a virtual reality artwork that engages the stories of ordinary American soldiers who became torturers while serving their country. It immerses viewers in contemporary home settings and evocative memory-scapes, where viewers face challenging accounts, based on veterans' testimonies, of US Military enhanced interrogation practices and human rights abuses that occurred during the Iraq War and its aftermath.



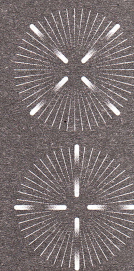
## Noor-A Brain Opera 2016

Ellen Pearlman

18  
May  
2016

Noor (which translates as 'light' in Arabic) is an audiovisual brain opera that asks, through metaphor, analogy, sound, text, light, movement, brain sensors and audience interaction with an 'actor' wearing an Emotiv EEG brainwave headset just one simple question - "Is there a place in human consciousness where surveillance cannot go?"

The libretto is controlled by one performer using an EEG enabled headset. The performer's emotional states will, at various times, launch digital databanks of video, audio and text enabled events while simultaneously displaying the performer's brainwaves live- time.





## SAT curated program of dome works in CUPOLA

These four short works and three excerpts of longer works were created in art residencies at Montreal's Society for Arts and Technology (SAT). Founded in 1996, SAT is a non-profit organization recognized internationally for its active, leading role in developing immersive technologies, augmented reality and creative use of high-speed networks. Its premises harbours the SATOSPHERE, a permanent modular dome, dedicated to the development and presentation of 360° immersive experiences.

[www.sat.qc.ca](http://www.sat.qc.ca)

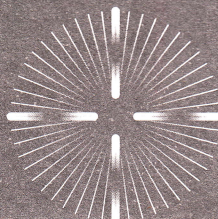
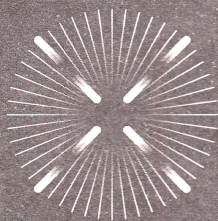
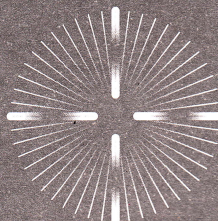
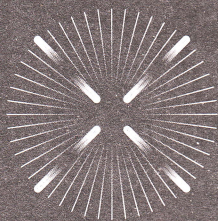
CUPOLA is a visualization dome developed at the CityU SCM Applied Laboratory for Interactive Visualization and Embodiment (ALiVE).

<http://alive.scm.cityu.edu.hk/>

### Venue address:

Outside Wong Cheung Lo Hui Yuet Hall  
5th Floor, Academic 3  
City University of Hong Kong  
Tat Chee Avenue, Kowloon Tong

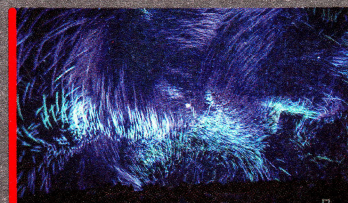
16-23  
May  
2016  
10:00 /  
daily 21:00



## SWARM

Yan Breuleux and Sam & Sam

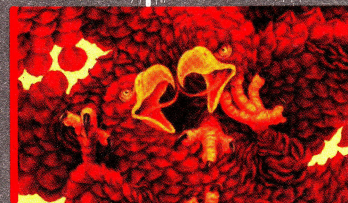
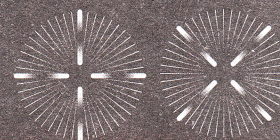
Swarm invites us into states of inert materials, through to human and animal life, and explores the complex relationships between clouds of particles and sound grains.



## PLUROMA

Dustyn Lucas

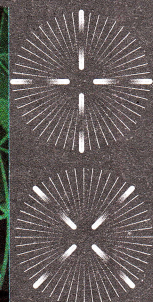
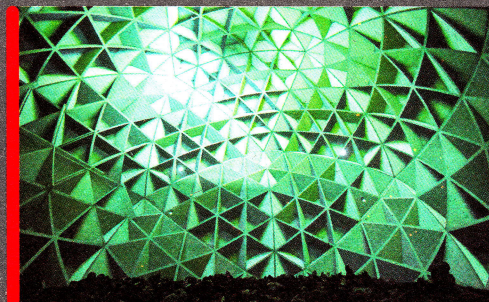
Pluroma is a visual journey into the fractal paintings of Dustyn Lucas. Viewers will be lost in the self-similar nature of each painting while exploring the visual possibilities of an infinitely fractal universe.



## MULTIVERSE

Sean Caruso and Paul Currie

A journey between dimensional planes, reaching beyond the observable Universe, into imagined environments where the laws of physics are ever changing and unlike anything we have experienced.

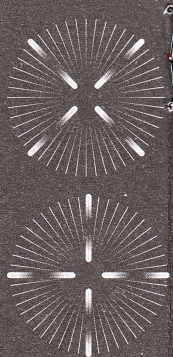
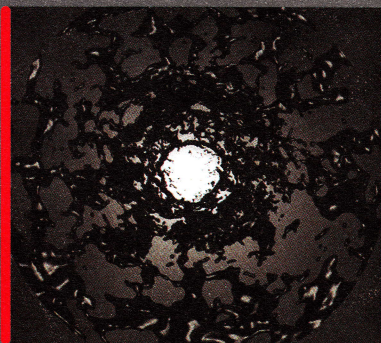




## DARKMATTER

Patrick Trudeau and Orbital

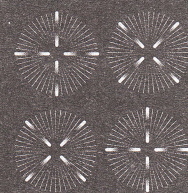
In this immersive film, the spectator floats through 3D landscapes, particles and fluid simulations. The play of light and shadows, the material constructions, the everchanging voids, are creating negative spaces which become objects of interest.



## HARMONIELEHRE

John Adams, OSM Maestro Kent Nagano

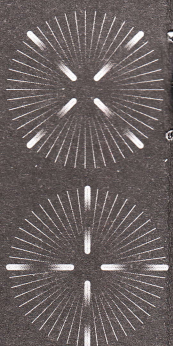
From a unique point-of-view at the heart of the orchestra, the audience is propelled into the composer's imaginary world.



## NORTHERN RESONANCES

Roman Zavada

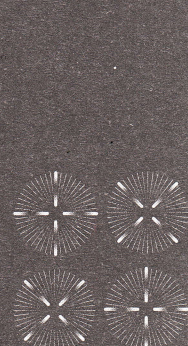
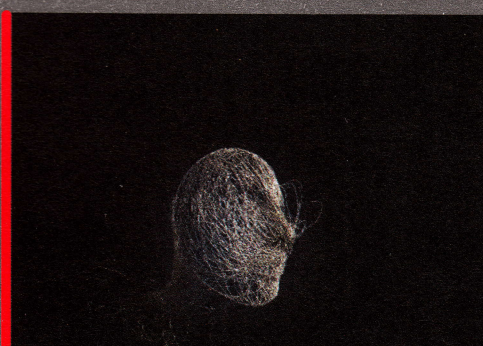
With an upright piano planted in the rock of the Canadian Shield, the film offers a colourful immersive dive into the heart of the boreal forest, under the polar lights where the piano's resonating strings enter in a dialog with the filmed 360° auroras.



## RE-GENERATION

SAT, Yan Breuleux, Jean Ranger

This immersive meditation explores the role of human imagination in shaping the Anthropocene, integrating artistic animations and scientific visualization to take participants to the heart of Earth's regenerative and re-imagine humanity's relationship to the planet.





# Digital Synesthesia

The three-year arts-based research project Digital Synesthesia (2013 – 2016) has been organized by the Department of Digital Art at the University of Applied Arts Vienna, Austria.

The inter- and trans-disciplinary project aimed at the exploration of the synesthetic capabilities of digital art and focused on its technological, medial and aesthetic conditions, which can provoke synesthetic experiences for non-synesthetes. As a result, fourteen digital artworks of seventeen internationally renowned artists have been produced and now are presented in this ISEA2016 exhibition, either in their original or documentary versions.

[www.digitalsynesthesia.net](http://www.digitalsynesthesia.net)

Exhibiting Artists: Anke Eckardt, Karl Heinz Jeron, kondition pluriel (Martin Kusch/Marie-Claude Poulin), Alan Kwan, Karen Lancel/Hermen Maat, Marcello Mercado, Ulla Rauter, Ruth Schnell, Jeffrey Shaw/Sarah Kenderdine, David Strang/Vincent Van Uffelen, Tamiko Thiel/Christoph Reiserer, Peter Weibel

Exhibition Concept: Katharina Gsöllpointner, Ruth Schnell, Romana Schuler  
Exhibition Design: Wolfgang Fiel  
Curatorial Board: Katharina Gsöllpointner, Ruth Schnell, Romana Schuler, Jeffrey Shaw, Peter Weibel  
Presented at ISEA2016 in cooperation with CityU School of Creative Media

## Exhibition venue:

6th Floor, Academic 3  
Outside the upper level of Wong Cheung Lo  
Hui Yuet Hall & Room 6214  
City University of Hong Kong  
Tat Chee Avenue, Kowloon Tong

## Time/Date:

10:00-21:00, 17 May 2016  
12:00-21:00, 18 May 2016  
10:00-21:00, 19-22 May 2016

Preview reception: 17:00-19:00, 16 May 2016  
Opening reception: 12:00-13:00, 18 May 2016  
(5th Floor, outside Wong Cheung Lo Hui Yuet Hall, Academic 3)

di:'angewandte

DIGITALEKUNST



FWF  
Der Wissenschaftsfonds.

BUNDESKANZLERAMT | ÖSTERREICH  
KUNST UND KULTUR

AUSTRIAN  
CONSULATE  
GENERAL  
HONG KONG

AUSTRIAN  
EMBASSY  
BEIJING

österreichische botschaft peking  
österreichisches kulturforumpek



## Giuseppe Castiglione - Lang Shining New Media Art Exhibition

This groundbreaking exhibition combines analog and digital technologies to present the masterpieces of Giuseppe Castiglione (1688-1766), an Italian Jesuit missionary who became a highly influential painter at the imperial court of the Kangxi, Youngzheng and Qianlong Emperors. It results from a creative partnership between City University of Hong Kong and the National Palace Museum.

The exhibition's innovative design combines historical artworks, new media and interactive art to create a compelling, multi-sensory, visitor experience. Twenty-eight full-size facsimiles of Castiglione's paintings, famous for their merging of Eastern and Western styles, are presented side by side with thirteen digital interpretations of these works, nine of which were created at the CityU School of Creative Media. The result is a fascinating conjunction of traditional and contemporary modes of representation.

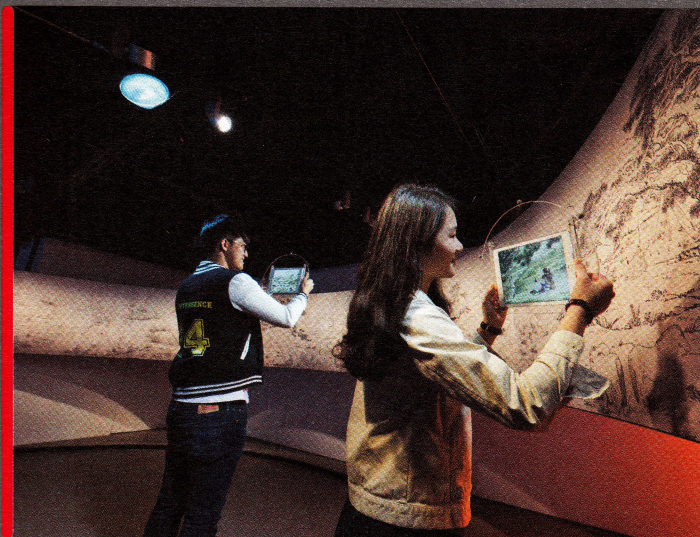
### Advisors:

Way Kuo, Paul Lam (City University of Hong Kong),  
Fung Ming-chu, Ho Chuan-hsing, Lin Quo-ping  
(National Palace Museum)

### Curators:

Jeffrey Shaw (City University of Hong Kong),  
Hsieh Chun-ko, Kuo Chen-wo (National Palace Museum)  
Hwang Wang-hwa (Institute for Information Industry)

The main exhibition is accompanied by 'Castiglione in Context' curated by Isabelle Frank



### Exhibition venue:

18th Floor, Academic 3  
City University of Hong Kong  
Tat Chee Avenue, Kowloon Tong

### Time/Date:

10:00-19:00 daily (Closed on Mondays),  
26 April - 31 July 2016

Inquiry: [cpro@cityu.edu.hk](mailto:cpro@cityu.edu.hk) / +852 3442 7654

[www.cityu.edu.hk/langshining/index.shtml](http://www.cityu.edu.hk/langshining/index.shtml)

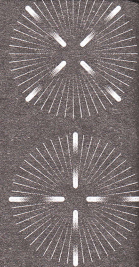


國立故宮博物院  
NATIONAL PALACE MUSEUM



## JUST DIG/IT!

Solo exhibition by Maurice Benayoun



During ISEA 1995, the digging of the Tunnel under Atlantic started in Montreal Museum of Contemporary Art and, at the same time, in the Centre Pompidou of Paris.

20 years after, the exhibition JUST DIG/IT! invites you to navigate human-to-human connections in the real and the virtual. Living memories of Inside the Tunnel under the Atlantic (1995, video, 22'30') and Inside the Paris-New Delhi Tunnel (1997, video, 13'00'), are both presented for the first time as large-scale installations, with two brand new Tunnels.

BORDERS TUNNEL and COLORS TUNNEL are two ways of digging through boundaries often associated with violence, wars and conflicts. In the real world, digging tunnels is a way to reduce distance and a means to go through cultural, political and geographic obstacles. With the virtual tunnels, a new space for dialogue opens up. The ambiguity of Internet-conveyed images and data, and the abundant stream of eye-catching visuals keep open the wounds resulting from the impact of symbolic and political dividing lines.

osage

CONTEMPORARY ART GALLERY

osage art foundation

### Exhibition venue:

Osage Hong Kong  
4/F, 20 Hing Yip St, Kwun Tong, Hong Kong

### Exhibition opening hours:

20 April - 25 May 2016,  
Mon-Sat 10:30-18:30, Sun 14:30-18:30  
(Open to special appointments outside of these times.  
Closed on public holidays)

### Osage special brunch reception for ISEA2016:

22 May 2016, 13:30-17:00

Inquiry: [info@osagegallery.com](mailto:info@osagegallery.com) / +852 2793 4817

[www.osagegallery.com](http://www.osagegallery.com)

